

Hydraulic clamps type HSE and HSA

Hydraulic clamps type HSE and HSA are single-acting power elements equipped with return springs, which are used in hydraulic fixtures where only a very restricted space is available for the generation of high forces with limited piston movement. The type HSE is designed as a screw-in cylinder whereas type HSA is manifold mounting. These clamps are available, depending on application with piston diameters between 12 and 40 mm and strokes between 2 and 25 mm. They are mainly used for clamping work pieces, slides and guides, indexing round tables and for bending punching and cutting purposes.

Nomenclature: Hydraulic clamps

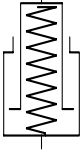
Design: Screw-in version
Manifold mounting

P_{max}: 500 bar

F_{max}: 200 ... 60000 N



Basic types and general parameters

Basic type and size	Stroke (mm)	F _{max} (N) with 500 bar	Oper. pressure p _{max} (bar)	Mounting thread	Symbol
HSE 12	2 .. 8	5500	500	M 20 x 1.5	
HSE 16	3 .. 12	10000		M 24 x 1.5	
HSE 20	4 .. 20	15000		M 30 x 1.5	
HSE 24	5 .. 20	23000		M 36 x 1.5	
HSA 32	20	40000		---	
HSA 40	25	60000	---		

Order examples

HSE 24 - 15

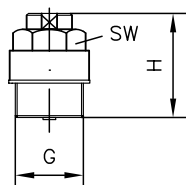
Hydraulic screw-in clamps type HSE, piston diameter 24 mm, stroke 15 mm

HSA 32 - 20

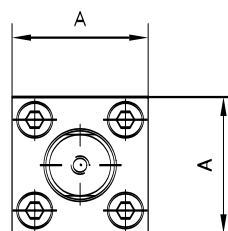
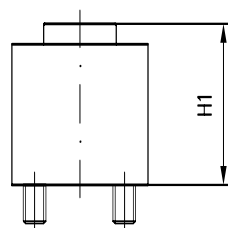
Manifold mounting hydraulic clamps type HSA, piston diameter 32 mm, stroke 20 mm

Dimensions

Type HSE ..



Type HSA ..



All dimensions in mm, subject to change without notice!

Basic type	H ¹⁾	G	SW	m (kg)
HSE 12	20.5 ... 32.5	M 20 x 1.5	a/f 24	0.05 ... 0.08
HSE 16	26.5 ... 41.5	M 24 x 1.5	a/f 24	0.08 ... 0.12
HSE 20	28.5 ... 56	M 30 x 1.5	a/f 30	0.14 ... 0.3
HSE 24	34 ... 65	M 36 x 1.5	a/f 36	0.25 ... 0.5

Basic type	H1 ¹⁾	A	m (kg)
HSA 32	71	60	1.6
HSA 40	85	70	2.5

1) Plus stroke

Further information

- Hydraulic clamps type HSE and HSA

D 4711

- See also section "Devices for special applications" (Hydraulics for clamping)

For page and section of the devices additionally listed, see type index